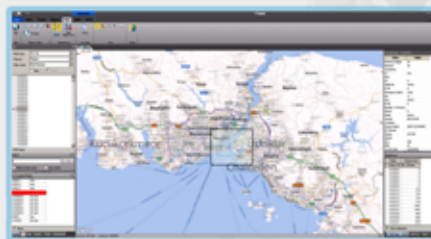
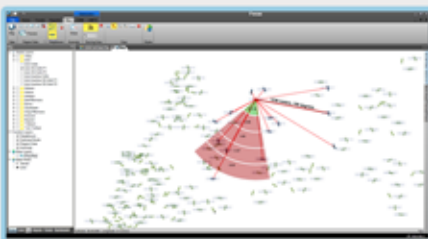




Focus

Performance Management

Focus is Innovile's Performance Management Solution Platform specifically designed for Mobile Networks. It increases the visibility of all mobile network layer performance (RAN/UTRAN, Transport, Core) through a vendor - free environment, (and supports all access technologies (GSM, WCDMA and LTE). All-in-one features move Focus ahead of its competitors.



- Trend** – performs all network level performance trends reporting with various time resolutions on multiple screens. Instant statistics give you only a 5 minutes delay for your special event activities. Get accurate and fast data from every level of your network.
- Anomaly** – detects node/network level performance degradations within an hour and informs related departments via e-mails and sms.
- Report** – pinpoints root-cause of network problems using network-wide configuration data, statistics and HW site data.
- GIS** – shows all KPI (Key Performance Indicators) on satellite view map as static thematic or dynamic movie.
- Optimisation** – enables KPI improvement based on real customer measurements and traces.

KEY BENEFITS

- Faster troubleshooting and better dimensioning by hourly and daily KPI visualisation
- Catch immediately any node performance degradation and have FULL CONTROL on your network performance
- Get PROACTIVE notifications and DETECT ANY OCCURRENCE before it causes any big problems
- Immediate traffic, congestion and quality control on special events such as meetings, festivals, sporting events, **with no more than 5 minutes delay**
- Improved Time and Resource efficiency with **one-click** customised performance reports
- Have vendor-free optimisation modules based on real customer measurements. DO NOT INVEST in any vendor tool
- Play KPI MOVIE ON MAP, understand changes within time and location. Make your investment at the RIGHT TIME and PLACE
- Do parameter analysis along with statistics and catch any inconsistency
- Boost your network performance between 15% - 25% with the inconsistency corrections based on findings

